

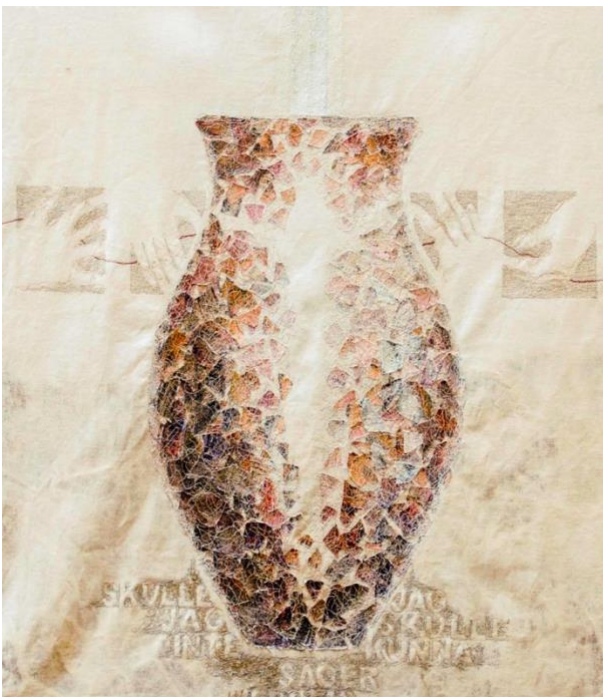
REHABILITATION

Difficulties we undergo in life may well influence our entire situation, and everybody's situation is unique with unique requirements. We believe this view to be the basis of a sound and lasting rehabilitation, together with the genuine permission for each person to be different; to be oneself.

In our rehabilitating initiatives we strive for the development of each person's previously unexploited resources, as well as to offer true participation.

Since many years we receive participants for work-related rehabilitation and occupational training (***Hela Livet***), in cooperation with the Swedish Employment office, and the Social authorities in Gotland. For those in need of a more profound support and rehabilitation we offer, since the beginning of 2016, a program with particular emphasis on holistic perspectives and individual treatments (***Hela Du***). The content of the latter is based on science and proven experience and run in cooperation with the Healthcare administration in the Region of Gotland.

Please read more under each topic!



*Our life can be likened to a beautiful vase
Someone has thought us
Someone has created us marvellously beautiful
and
unique.*

*But we're made of fragile stuff
At times there may be a crack in the delicate
surface
At times we may even seem to break.*

*The Bible tells us that God can be likened to a
potter.
When life doesn't turn out as we had intended
When things go wrong, or even to pieces
That's when God wants to hold us in his potter's
hands
and mould us to back to wholeness again
not to an inferior quality, but to the original
design.*